

Project Title

Predicting functional outcomes in conservatively managed proximal humerus fractures with radiographic evaluation

Project Lead and Members

Project lead: Joshua Song

Project members: Lim Chien Joo, Jonathan Low, Ivan Chua, Ernest Kwek, Bryan Tan

Organisation(s) Involved

Tan Tock Seng Hospital, Woodlands Health Campus

Healthcare Family Group Involved in this Project

Medical, Allied Health, Healthcare Administration

Specialty or Discipline

Orthopaedics, Medical & Laboratory Technology, Medical Statistician

Project Period

Start date: Jan 2017

Completed date: Dec 2020

Aims

1. Studying the utility of radiographic parameters in predicting functional outcomes
2. Obtaining a cut off for poor functional outcomes
3. Assess the intra and interrater reliability of these radiographic measurements

Background

See poster appended / below

Methods

See poster appended / below

Results

See poster appended / below

Conclusion

See poster appended / below

Additional Information

Singapore Health & Biomedical Congress (SHBC) 2021: Singapore Clinician Investigator
Award – Bronze Award

Project Category

Applied/ Translational Research, Quantitative Research

Keywords

Proximal Humerus Fracture, Radiographic Parameters, Reliability, Functional
Outcomes

Name and Email of Project Contact Person(s)

Name: Joshua Song

Email: jstham@outlook.com

Introduction

Background

- Treatment of proximal humerus fractures remains controversial
- Multiple factors can determine functional outcomes
- Predicting functional outcomes for conservatively managed fractures with radiographic parameters has not been studied extensively
- Most studies have looked at the utility of anteroposterior (AP) angles (1)
- Few studies have looked at the validity of the Y-scapular angles in predicting functional outcomes (2)
- The intra and interrater reliability of the radiographic measurement also remains conflicted (2, 3)

Aims

1. Studying the utility of radiographic parameters in predicting functional outcomes
2. Obtaining a cut off for poor functional outcomes
3. Assess the intra and interrater reliability of these radiographic measurements

Results

Outcome measure and functional evaluation

- Mean follow up was 7 months (1-14 months)
- Mean quick DASH, OSS, and CSS at 1 year were 7.1 (11.0), 44.6 (5.9), and 67.8 (8.7) respectively

Intra and interrater reliability

- The lowest intrarater reliability for both raters was ICC 0.938 for Y-scapula angle in rater 1
- Interrater reliability was excellent for both raters, with the best interrater reliability occurring for final CCD angle at 0.986

Radiographic evaluation

- Mean initial CCD (Standard Deviation) for the varus group was 119° (18) and 153° (12) for valgus
- At final follow up, CCD for the varus group was 112° (17) and 140° (17) for the valgus group
- Mean initial Y-scapula angle for retroverted group was 28° (23) and 70° (8) for the anteverted group
- Mean final Y-scapula angle for retroverted group was 27° (23) and 40° (8) for the anteverted group

Correlation of functional outcome with radiographic assessment

- There was no significant correlation between quick DASH and radiographic parameters
- There was a significant correlation between CSS and initial HHH but this was not strong enough to derive a cut off point
- However, there was a **significant correlation between OSS and final Y-scapular angle**
- Based on the relationship between OSS and final Y-scapular angle, a cut off of ≥ 40 was used to identify the optimum sensitivity and specificity to obtain a **cut off of 25°**. The area under ROC (AUROC) was 0.611

Significant correlations in radiographic parameters for:

1. Initial valgus CCD angle and change in CCD angle
2. Initial retroverted Y-scapular angle and change in Y-scapular angle
3. Initial HHH and change in HHH

Methods

- **Radiographic parameters** Caput-collum-diaphyseal (CCD), Y-scapular angle, and humeral head height (HHH) for 114 patients were measured by 2 observers
- **Functional outcome scores** including quick Disability of the Shoulder, Arm and Hand (DASH), Oxford Shoulder Score (OSS), and Constant Shoulder Score (CSS) were measured at presentation and at the 1-year mark
- Patients were split into varus/ valgus alignment and anteversion/ retroversion based on their initial fracture configuration
- **Intra and interrater reliability** was measured with the **intraclass correlation coefficient (ICC)**
- **Correlation** between radiographic parameters and functional outcome scores were measured with **linear regression models**
- **Receiver operator curve (ROC)** analysis and logistic regression analysis were used to obtain a cut off angle

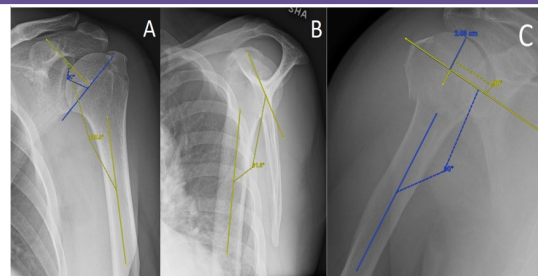


Figure 1: Radiographic parameters measured. A, CCD angle; B, Y-scapular angle; C, HHH

	Coeff	95% CI	P value	Adj Coeff	95% CI	P value
CCD angle						
Varus	0.103	-0.057, 0.262	0.2	0.065	-0.112, 0.242	0.455
Valgus	-0.026	-0.085, 0.033	0.385	-0.019	-0.071, 0.034	0.48
Y-scapula						
Retroversion	0.058	0.008, 0.109	0.025*	0.056	0.008, 0.104	0.022*
Anteversion	0.08	-0.364, 0.380	0.959	-	-	-
HHH	0.156	-0.060, 0.373	0.155	0.028	-0.194, 0.251	0

Table 1: Relationship between final radiographic measurements and OSS

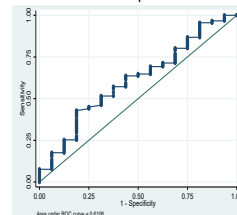


Figure 2: AUC for final Y-scapula angle with OSS cut-off 40

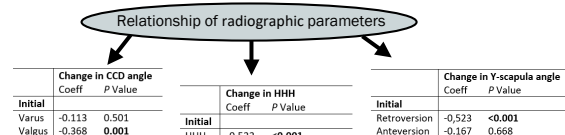


Figure 3: Relationship between initial radiographic parameters and change in corresponding angles

Conclusion

Retroversion as a predictor of poor function

- Court Brown et al (1) showed that the degree of translation on initial AP radiographs was related to function outcome scores at 1 year
- Keene et al (4) showed that healing in 55° or less on AP views and less than 1.5mm displacement predicted good outcomes
- Poeze et al (2) were the first to describe the initial Y-scapular angle in predicting function, their cut off was 55° angulation
- Our paper shows a cut off of 25° and below on final Y-scapular retroversion predicted poor outcome

Predicting displacement

- The more displaced the fracture was in valgus and retroversion initially, the more likely the fracture was to displace further
- Displacement can be due to multiple reasons like alcohol intake and osteoporosis (5)

Intra and interrater reliability

- The intra and interrater reliability was excellent in this study
- These findings may aid surgeons in the future with planning for surgical intervention

References

- (1) Court-Brown C, Garg A, McQueen M. The translated two-part fracture of the proximal humerus: epidemiology and outcome in the older patient. *The Journal of bone and joint surgery British volume* 2001;83(6):799-804. doi: 10.1302/0301-620x.83b6.11401.
- (2) Poeze M, Lencsen AF, Van Empel JM, Verbruggen JP. Conservative management of proximal humeral fractures: can poor functional outcome be related to standard transscapular radiographic evaluation? *Journal of shoulder and elbow surgery* 2010;19(2):273-281. doi: 10.1016/j.jse.2009.07.066.
- (3) Assunção J, Malavolta E, Beraldo R, Gracitelli M, Bortolo-Rodrigues M, Neto AF. Impact of shoulder rotation on neck-shaft angle: a clinical study. *Orthopaedics & Traumatology: Surgery & Research* 2017;103(6):865-868. doi: 10.1016/j.otsr.2017.04.007.
- (4) Keene J, Hutzenga R, Engber W, Rogers S. Proximal humeral fractures: a correlation of residual deformity with long-term function. *SLACK Incorporated Thorofare, NJ*; 1983.
- (5) Frank FA, Niehaus R, Borbas P, Eid K. Risk factors for secondary displacement in conservatively treated proximal humeral fractures: introducing two new radiological predictors. *The Bone & Joint Journal* 2020;102(7):881-889. doi: 10.1302/0301-620X.102B7-BJ-2020-0045.R1.